

# Chalet Kitzalm

Ferienhaus in Oberndorf in Tirol



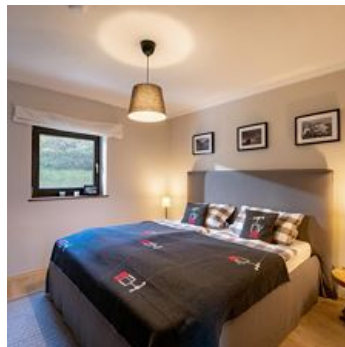
Birkenweg 17 · A-6372 Oberndorf in Tirol · [isabel.maier@kitzalm.de](mailto:isabel.maier@kitzalm.de) · 0049 177 5528366

# Chalet Kitzalm

## Ferienhaus in Oberndorf in Tirol

Our chalet has got a very nice view to the mountain Wilder Kaiser. You can go by ski to the ski lift. The trainstation to go to Kitzbühel is just down the hill and 10 minutes walk. The ski arena Kitzbühel (Hahnenkamm) is also just 10 minutes drive. In Obendorf you have got a supermarket, bakery and some hotels and restaurants. In the summer you can go by bike to Kitzbühel via Römerweg only 20 minutes along the river Aache.

Our house has got two rooms with twin beds and two rooms with single beds. One master bath near to the twin bed room and one bath room with seperate WC next to the single bed rooms.



right on the slope · mountain location · meadowlands

## Rooms and Apartments

### Current Offers

#### Apartment, shower, toilet, 4 or more bed rooms



1-8 Personen · 4 Bedrooms · 120 m<sup>2</sup>

Chalet Kitzalm has a marvellous view of the Wilder Kaiser. The chalet is in alpine style and promises an absolute feel-good atmosphere. The living space is approx. 120 m<sup>2</sup> with its own garden and 2 gar...

ab  
**€ 280,00**

per apartment on 27.07.2024

**TO THE OFFER**

## Conditions

On-site parking is included. Free WiFi

Exclusive, payable on site: final cleaning and local tax

## Chalet Kitzalm

Ferienhaus in Oberndorf in Tirol

Birkenweg 17

A-6372 Oberndorf in Tirol

Email: [isabel.maier@kitzalm.de](mailto:isabel.maier@kitzalm.de)

Phone: 0049 177 5528366