

Ferienwohnung MittenDrin

holiday apartment in Hopfgarten im Brixental

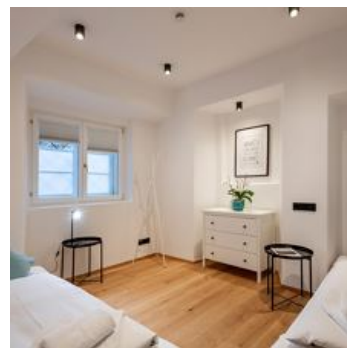
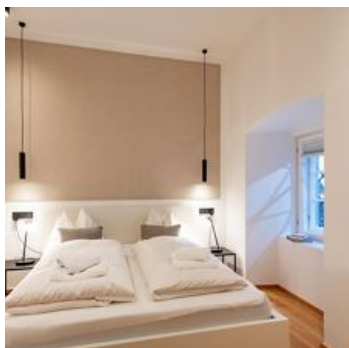
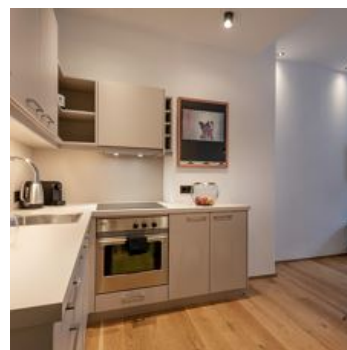


Meierhofgasse 2 · A-6361 Hopfgarten im Brixental · zelger@kufnet.at · +43 664 4410991

Ferienwohnung MittenDrin

holiday apartment in Hopfgarten im Brixental

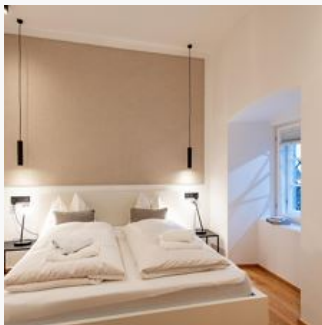
The flat is located in one of the oldest houses in Hopfgarten, which dates back to the 16th century. During the complete renovation in 2023, particular emphasis was placed on preserving the historic character of the house. The mountain railway can be reached on foot in 3 minutes and the rented ski locker at the mountain station provides additional luxury. The MittenDrin flat in the historic centre of Hopfgarten therefore offers an ideal starting point for an unforgettable holiday in the Kitzbühel Alps.



Rooms and Apartments

Current Offers

Apartment, shower, 2 bed rooms



1-4 Personen · 2 Bedrooms · 59 m²

Welcome to our modern flat in the centre of the picturesque market town of Hopfgarten. The unique, newly renovated 2-bedroom flat with a spacious bathroom combines contemporary comfort with traditiona...

ab
€ 285,00

per apartment on 28.01.2025

TO THE OFFER

Conditions

Pets are not allowed.

No direct car park available.

Ferienwohnung MittenDrin

holiday apartment in Hopfgarten im Brixental

Meierhofgasse 2

A-6361 Hopfgarten im Brixental

Email: zelger@kufnet.at

Phone: +43 664 4410991