

Bauernhof Zieplhof

inn in Westendorf

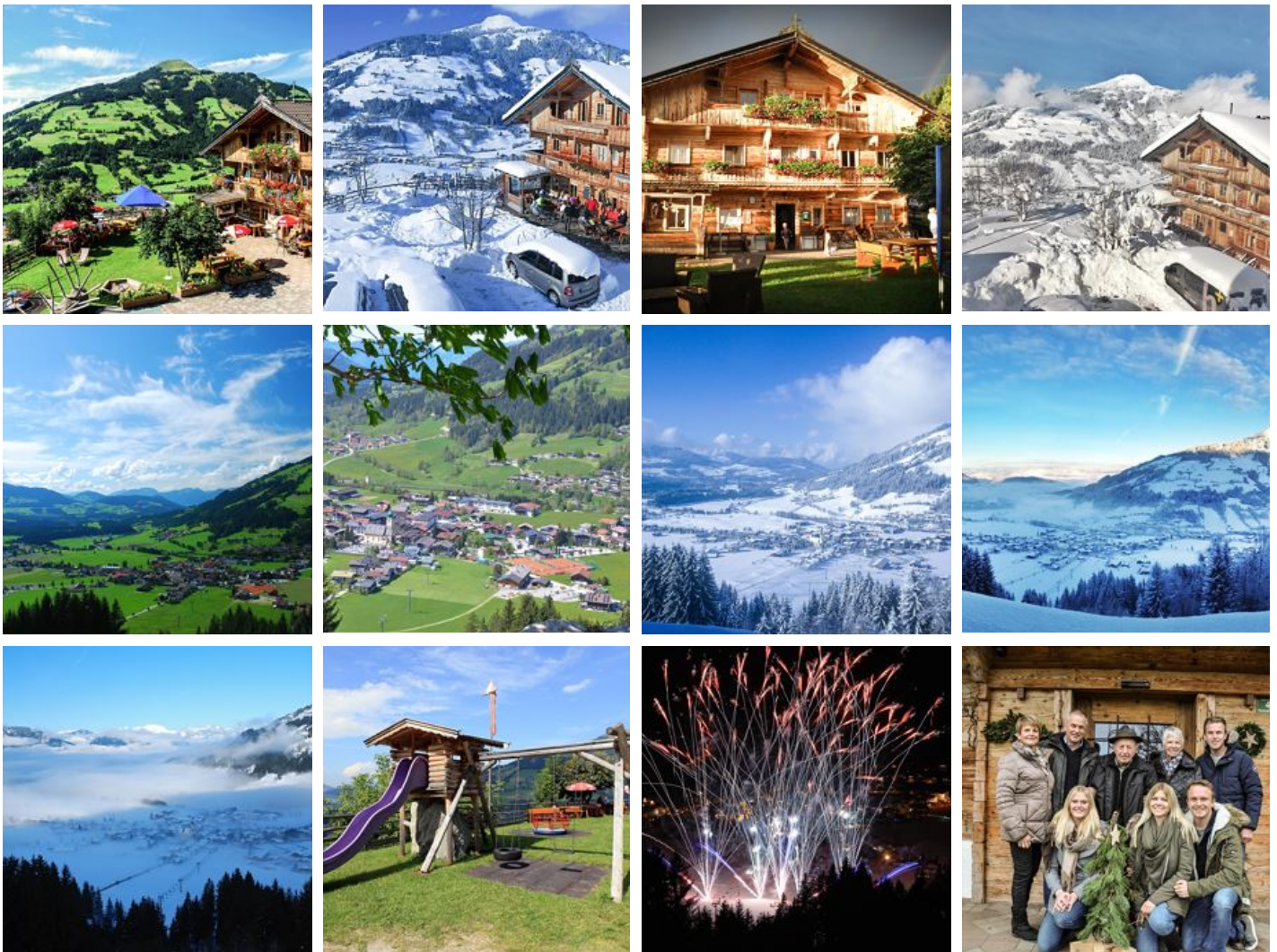


Nachtsöllberg 4 · A-6363 Westendorf · steindl@zieplhof.at · 0043 5334 6413
Additional information at <https://www.zieplhof.at>

Bauernhof Zieplhof

inn in Westendorf

Our farm house is quietly situated at 1000 m with wonderful views over Westendorf. The ski run is just outside and offers you the direct entrance to the SkiWelt Wilder Kaiser Brixental. We have a large play ground, pets, pony riding - free for our guests, terrace, a la carte, half board.



quiet location · mountain location · on the hiking path · meadowlands · private setting · near the forest · right on the slope

Rooms and Apartments

Current Offers

double room with shower or bath tube, WC



Approx. 30m², 3 rooms with shower/Wc, 1 room with bath/WC, partly with balcony, 1st and 2nd floor, with smart TV (Netflix)

ab
€ 72,00

per person on 17.07.2024

TO THE OFFER

1-2 Personen · 1 Bedrooms · 30 m²

4-bed room, shower, toilet, 1 bed room



Approx. 30m², 3 rooms with shower/Wc, 2 room with bath/WC, partly with balcony, 1st and 2nd floor, with smart TV (Netflix)

ab
€ 72,00

per person on 17.07.2024

TO THE OFFER

1-2 Personen · 1 Bedrooms · 30 m²

Conditions

incl. pony riding in summer, pets free.

Bauernhof Zieplhof

inn in Westendorf

Nachtsöllberg 4
A-6363 Westendorf
Email: steindl@zieplhof.at
Phone: 0043 5334 6413
<https://www.zieplhof.at>



Familie Steindl

We, the family Steindl stand with much cordiality and passion behind what we do.

For decades, we have pleasure to inspire a delight our guests and to spoil them. Originated from a small farm and today we are a family-run mountain restaurant in Westendorf in the Brixental that special feeling noticeably and live a "Together for each other!" Only to make the effort your holiday with us for the most precious time of the year! We look forward to you - anytime and with an open heart!