

Angerle Hochalm

Ferienhaus in Westendorf



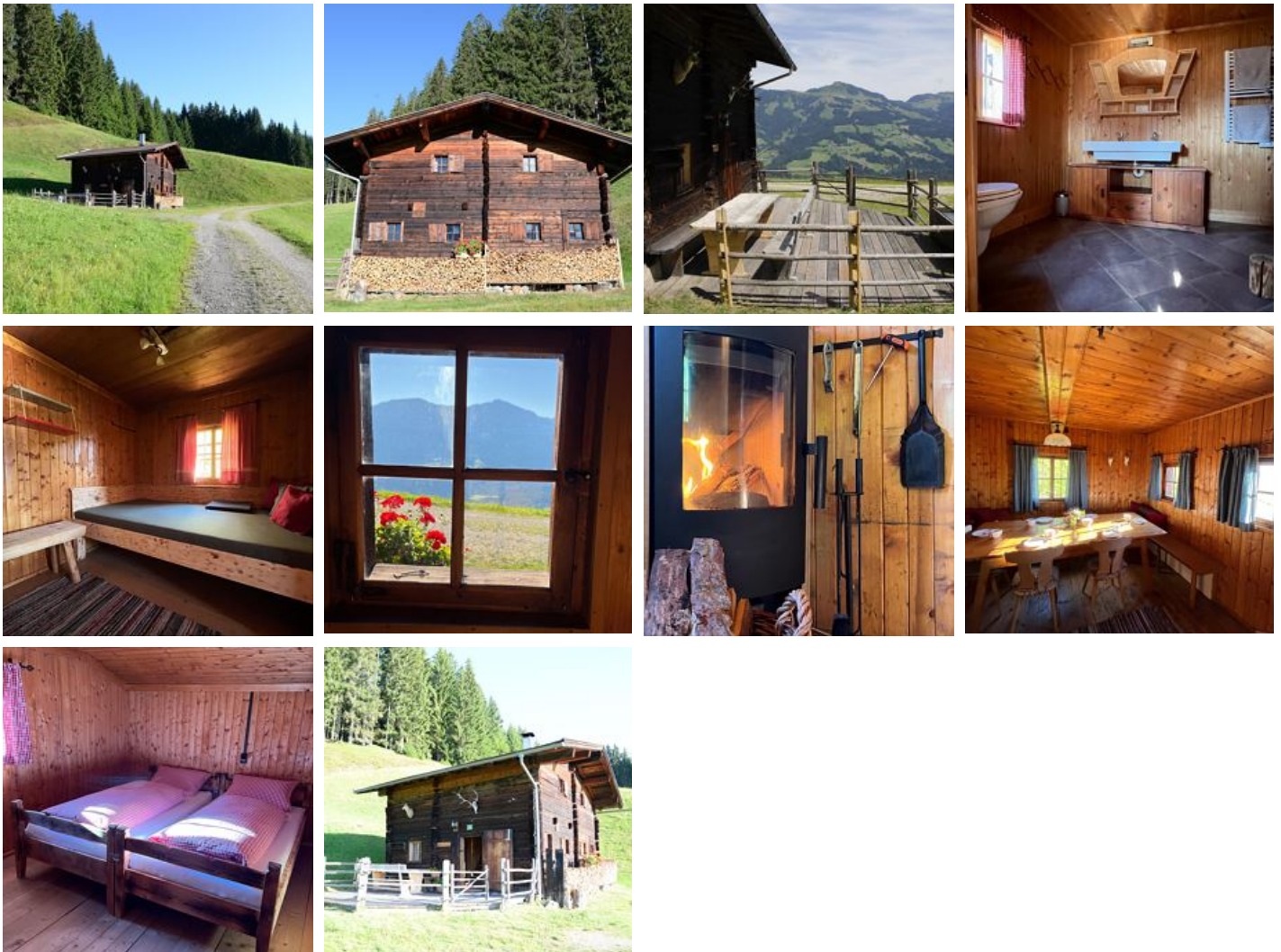
Schwaigerberg 36 · A-6363 Westendorf · angerlehochalm@gmail.com · **+43 664 7696042**

Angerle Hochalm

Ferienhaus in Westendorf

This 300-year-old hut is situated on the Schwaigerberg in a quiet location, where you can enjoy the beautiful views of the surrounding mountains, such as the Loferer Steinberge, the Rettenstein or the Choralpe, as well as the Wilder Kaiser. The sunny terrace invites you to linger over breakfast and dinner. Cows, horses and goats are in the immediate vicinity.

In the winter months, the hut is easily accessible with snow chains.



mountain location · private setting · quiet location · right on the bike path · near the forest · on the hiking path · meadowlands

Rooms and Apartments

Current Offers

Apartment, shower, toilet, 4 or more bed rooms



1-8 Personen · 4 Bedrooms · 80 m²

The hut is spaciously divided into four bedrooms, two double rooms and two twin rooms with an extra relaxation room. In addition, there is a bathroom with shower, kitchen and a separate dining room in...

ab
€ 230,00

per apartment on 21.12.2025

TO THE OFFER

Conditions

Final cleaning: € 80.00

Local tax: € 2,00

Angerle Hochalm

Ferienhaus in Westendorf

Schwaigerberg 36

A-6363 Westendorf

Email: angerlehochalm@gmail.com

Phone: +43 664 7696042